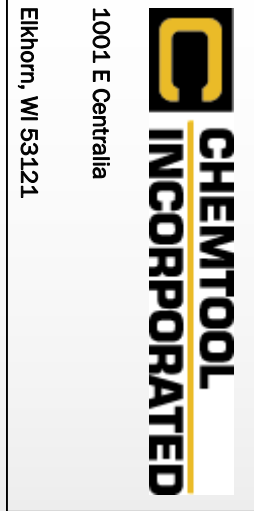


Contact us: Chemtool Incorporated
Sales Department
1001 E Centralia
Elkhorn, WI 53121
Office 262-723-6590
Fax 262-723-6730
Email sales@chemtool.com
www.chemtool.com

Alpha 2000 HD Series Benefits

- Alpha 2000 HD Series greases are especially made for the Die Cast industry, that combine excellent lubricity with supreme corrosion protection.
- Excellent resistance to high temperature degradation guarantees long service life. The equipment can run for extended periods without relubrication intervals. Alpha 2000 HD contributes greatly to a continuous die cast process by reducing breakdowns, that interrupt the process.
- Alpha 2000 HD outperforms other high temperature greases hands down. It will not dry up and leave the equipment without lubrication.



Alpha 2000 HD For Die Casters

It's Our Experience, Technology and Innovation that makes Chemtool your primary Die Cast Partner



ALPHA 2000 HD®: THE MOST SIGNIFICANT ADVANCEMENT IN LUBRICATING TECHNOLOGY—ONE GREASE FOR ALL YOUR EXTREME APPLICATIONS

INTRODUCING CHEMTOOL'S SUPERIOR GREASE TECHNOLOGY Features:

- Excellent thermal stability.
- Superior extreme pressure performance.
- Superior anti-wear performance.
- Very high corrosion resistance.
- Very high resistance to water wash out.
- Exceptional shock load capability.
- Excellent mechanical stability.

Alpha 2000 HD



Conventional Grease

When standard greases turn liquid, ALPHA 2000 HD is still functional.

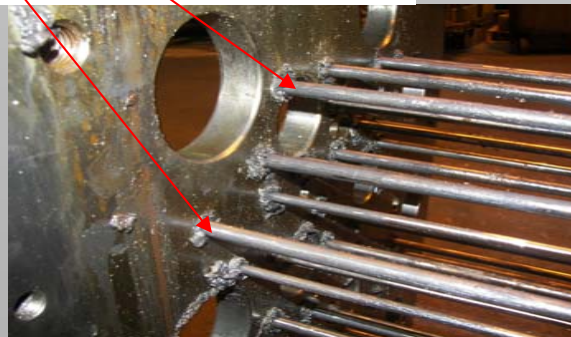
PERFORMANCE DRIVEN: ALPHA 2000 HD SERIES PERFORMANCE

Alpha 2000 HD Moly/Graphite:

Exceptional corrosion protection, shock load absorption capability, extreme pressure performance and wear protection combined with the mechanical and thermal stability make Alpha 2000 HD Moly Graphite the ideal lubricant for ejector pins.

Die Casters who evaluated Alpha 2000 HD Moly Graphite observed a drastic reduction in alignment and ejector pin breakage and an increase in the "machine uptime."

Our Alpha 2000 HD on the pins.



Alpha 2000 Series: A High Performance Grease for the die cast plant

Features:

This grease is recommended for the lubrication of:

- Ladle Arms
- Spray Equipment
- Furnace fan bearings
- Oven Bearings
- Robot Lubrication

Benefits:

- Longer relubrication intervals.
- Corrosion Protection
- Wear and EP performance

Alpha 2000 HD

